

ISLAND



ISLAND

ISLAND's multi-sensory landscape awaits, inviting adults and their babies into a playful place to tumble and fall and experience the joys of being caught and cared for.

ISLAND has been created especially for babies from birth to 12 months old, by Starcatchers and Frozen Charlotte. It is a special space to celebrate the unique relationship between babies and their grown-ups where loving connections can be stretched and strengthened. A place to cosy up together and drift away with us on a gentle journey of discovery.

With original live music and dance, this intimate, non-verbal performance is created specially for adults and their little one to share and enjoy together. Babies are free to explore the space with all their senses, while adults can take a moment to pause and reflect on the joys and challenges of new parenthood.

"I have seen quite a few mum and baby theatre performances with both of my children and this was the best yet! My little 6 month old baby boy loved it! It was engaged and entertained for a full hour by the performance."

"Huw loved the show today! He wouldn't let go of one of the ladies when she came to interact with him at the end of the show! He was mesmerised. Thank you"

ISLAND

CREATIVE TEAM & CAST

Laura Booth

Deviser & Performer

Jorja Follina

Deviser & Performer

Rachel Newton

Composer & Musician

Heather Fulton

Concept & Direction

Michaela Fee

Lighting Designer

Craig Fleming

Production Manager

Niloo-Far Khan

ISLAND Associate
Artist

Katy Wilson

Set & Costume
Designer

Ruby Worth

Choreographer

Lucy May Wilson

Stage Manager

Gemma Smith

Producer


ABOUT STARCATCHERS

Starcatchers is Scotland's Arts and Early Years organisation. We are dedicated to creating work for the birth-5 age group. Our vision is that our youngest children fulfil their rights through access to arts and creative experiences that give inspiration, joy and wonder to early childhood. We produce and tour high-quality performance work, in Scotland and internationally, with recent works including Float, Laaaunch!, Little Top and Mixed Up.

 Find out more at starcatchers.org.uk
[@StarcatchersUK](https://www.instagram.com/StarcatchersUK)

ABOUT FROZEN CHARLOTTE

Frozen Charlotte is an award winning Scottish theatre company that makes work for and with children and young people. Based in Moray in the North East of Scotland, we are passionate about making our work as accessible as possible to Scottish communities, particularly with children and young people who have fewer opportunities to engage with the performing arts.

 Find out more at frozencharlotte.com
[@frozencharlottetheatre](https://www.instagram.com/frozencharlottetheatre)





UK TOURING TECHNICAL SPECIFICATIONS

ISLAND is designed to be performed in traditional theatre and non-theatre spaces. The show can be self-contained; however, this needs to be discussed in advance of any confirmed bookings.

AGES

For babies from birth - 12 months and their grown ups.

CAPACITY

Maximum capacity of 40 per performance; (15 baby & adult tickets, plus 10 additional adult tickets). This should be confirmed with the company in advance of any tickets going on sale.

RUNNING TIME

ISLAND has a running time of 45 minutes without an interval. This includes a soft start and soft finish.

Maximum performances 2 per day with minimum 2-hour break between the end of first show and start of second show.

OUTLINE VENUE REQUIREMENTS

- Suitable for studio theatres and non-theatre spaces with minimum dimensions of 8m x 9m, with a
- Capacity of 15 babies and their grown-ups
- The space can be reduced to 7m x 8m with a smaller audience number
- Minimum height clearance of 3m
- Blackout not required, however windows must have curtains or blinds to block direct sunlight
- Space must be completely clear of equipment which could be harmful for babies (stacks of chairs etc)
- Access to a separate private space which can be used as a dressing room for performers to change
- 2 x 13amp power sockets
- Front of house gathering area and buggy park

INTERNATIONAL TOURING

Please contact us to discuss requirements for international touring.



MARKETING & ENGAGEMENT

We can provide online assets, high resolution images, print and marketing plans.

TRAILER

Coming Soon

Full film available on request.

WEE INSPIRATIONS

We also provide Wee Inspirations, based on concepts in the show. These are ideas for audiences to explore at home, which place the baby's voice at the heart of play together. Example:



Twinkle Twinkle Little One

During the show, Rachel sings a beautiful song about being a parent. Change the words of a song you know to share your own story together, your wee one will love hearing you sing to them.

You can also tell the story by making sounds, blowing raspberries or shaking rice in a bottle, your wee one will love to join in and add to the story



CONTACT DETAILS

For information on availability, fees, and full technical specifications please contact:

Producer

Gemma Smith

gemma.smith@starcatchers.org.uk

Co-Chief Executive

Jennifer Phillips

jennifer.phillips@starcatchers.org.uk

www.starcatchers.org.uk



*Frozen
Charlotte*



In association with
Imagine

About ISLAND

ISLAND's multi-sensory landscape awaits, inviting you and your baby into a playful place to tumble and fall and experience the joys of being caught and cared for.

ISLAND has been created especially for babies from birth to 12 months old, by Starcatchers and Frozen Charlotte. It is a special space to celebrate the unique relationship between babies and their grown-ups where loving connections can be stretched and strengthened. Cosy up together with your little one as you drift away with us on a gentle journey of discovery.

With original live music and dance, this intimate, non-verbal performance is created specially for you and your little one to share and enjoy together. Your baby is free to explore the space with all their senses, while you take a moment to pause and reflect on the joys and challenges of new parenthood.

ISLAND is presented in-the-round and can be performed in studio theatres and non-theatre spaces. It is designed to be self-contained with the option of adding theatrical lighting where available



Outline Venue Requirements

- Suitable for studio theatres and non-theatre spaces with minimum dimensions of 8m x 9m, with a capacity of 15 babies and their grown-ups
- The space can be reduced to 7m x 8m with a smaller audience number
- Minimum height clearance of 3m
- Blackout not required, however windows must have curtains or blinds to block direct sunlight
- Space must be completely clear of equipment which could be harmful for babies (stacks of chairs etc)
- Access to a separate private space which can be used as a dressing room for performers to change
- 2 x 13amp power sockets
- Front of house gathering area and buggy park

Technical Outline & Requirements

We bring everything required for the physical production including:

- Gold reflective roll-out dance floor 5.6m x 6m
- Bed and Rock set pieces
- Rugs, bean bags & cushions for the audience to sit on – these are positioned around the gold floor

Please provide:

- A clear and clean space which meets the minimum dimensions noted above in the venue requirements overview
- Ability to block out any direct sunlight
- The space must be suitably warm for dancers to perform along with for the babies and their families – preferably 20-21°C

Sound

We bring all sound equipment required including:

- Acoustic harp
- Viola
- Small powered speaker with microphone

Please provide:

- 13amp power socket

Lighting

ISLAND can be performed with or without theatrical lighting. The ISLAND set has various built in LED lighting which can be used in all types of venues.

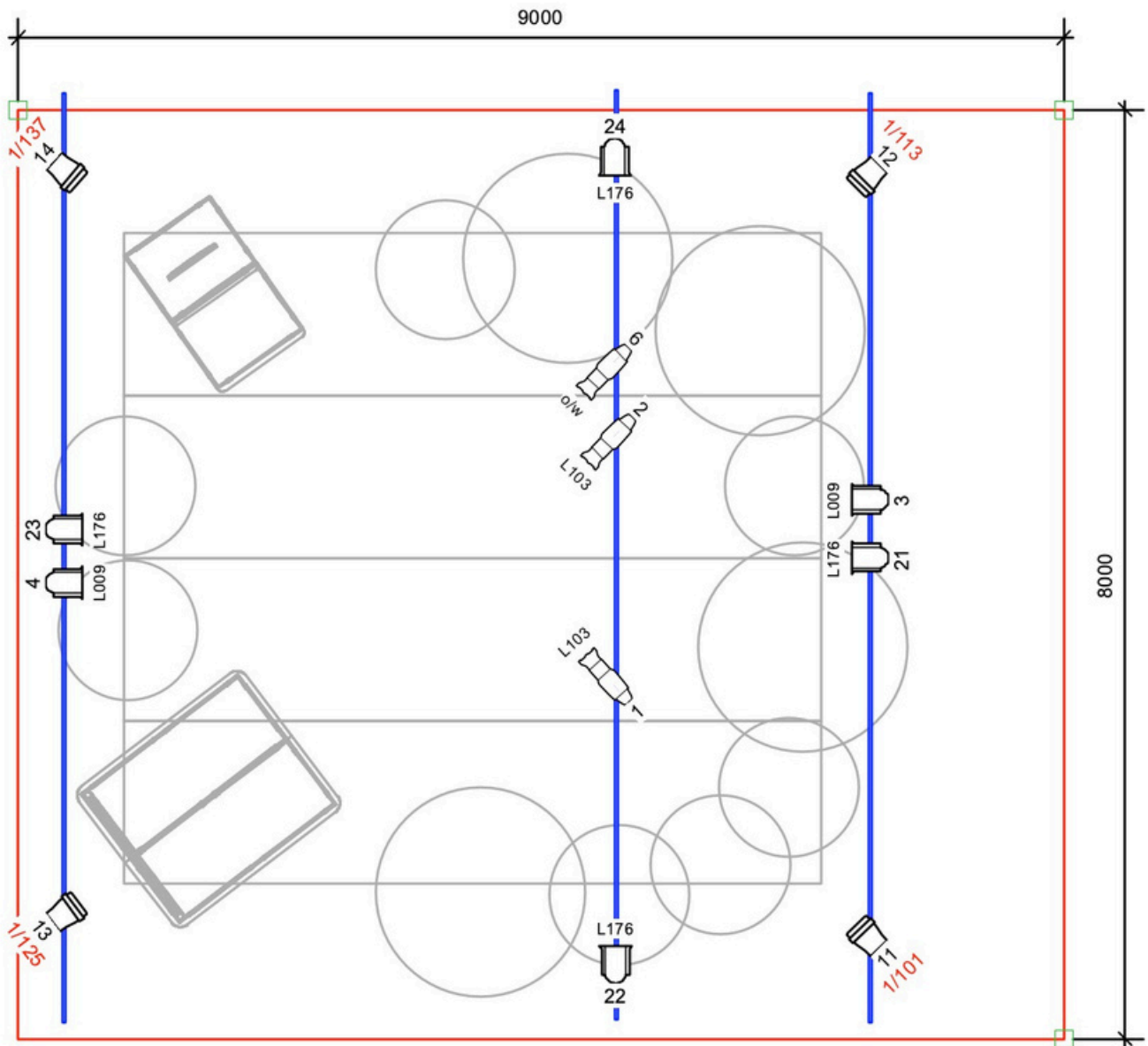
We bring the following

- Integrated LED tape around the bed structure
- Colour changing LED globes of various sizes (wired and wireless control)
- All controllers
- ETC Nomad lighting control

Where overhead theatrical lighting is available, we will use:

- 6 x 1k Fresnels with barn doors
- 3 x wide zoom profiles with working shutters
- 4 x Chauvet Colorado LED Pars (toured with combi cabling)

Lighting Plan (not to scale)



Symbol Key

	Selecon 1200 Fresnel @0.75 W	6
	Light Instr ETC Source 4 36deg	3
<hr/>		
Toured Equipment		
	Chauvet COLORado 2 Quad Zoom Tour @205 W	4

Management & Logistics

Producer	Gemma Smith (Starcatchers)	gemma.smith@starcatchers.org.uk 07808 933 221
Production Manager	Craig Fleming (SNC Productions)	craig@sncproductions.co.uk 07974 156 421
Stage Manager	Lucy May Wilson	lucymaystagemanagement@gmail.com 07858 368313

Transport

- All show related equipment travels in a long wheelbase transit style van
- Performers travel either by car or public transport
- Please provide parking for the van and a car

Staffing

- Our touring team
 - Stage Manager
 - 2 performers
 - 1 musician
- Please provide
 - One member of staff who is familiar with the venue to open up and advise the team on location of space and facilities
 - Where we are performing in a venue, please provide one technician
- All cues operated by our team
- No on-stage cues
- If the venue requires a member of staff to be present during a performance, this must be provided by the venue at their cost
- Any staffing costs must be agreed in advance with the Production Manager

Schedule

- Minimum 6 hours required to load in and set up where we use theatrical lighting, 4 hours when not using theatrical lighting
- On performance days, access is required minimum 90 minutes (2 hours preferred) before the first performance and up to 1 hour after the final performance
- 1 hour required for get out

Front of House

- House opens at advertised start time – the audience will be met in the foyer and guided into the space by our team
- Running time – up to 60 minutes including audience entering the space and free play at the end
- No interval
- Audience members are free to come and go throughout the performance
- Latecomers are allowed – audience can enter the space at any time
- Audience will be required to take their shoes off and to leave any jackets/large bags in a separate area to the performance space – this can be in the same room as the performance
- Please provide a separate space to park buggies, preferably not in the performance space

Backstage

- 1 dressing room required with full length mirror
- Access to toilet facilities
- Access to drinking water
- Access to washing and drying facilities for costume and towels

Health & Safety

- Risk assessment can be downloaded from [this link](#)

Document Revisions:

Version 1 (03.05.26)

- Provisional pre-production document created

Version 2 (10.05.26)

- Minor updates after opening
- Add lighting plan

Version 2.1 (12.05.26)

- Add request for buggy park